


REVISIONS			
LTR	DESCRIPTION	DATE	APPROVED
-	RELEASE PER R.A. 3181	05/12/01	GSB

Unless specified, all dimensions are in inches	DR	MAW	DATE	05/12/01	 <b>PARADISE DATACOM</b> <small>AN INTELEK PLC COMPANY</small>	
	CHK	GSB	DATE	05/12/01		
	APVD	GSB	DATE	05/12/01		
Tolerance in. / mm.					<b>APPLICATION NOTE, USING PARADISE DATACOM UNIVERSAL M&amp;C WITH LANTRONIX SERIAL PORT REDIRECTOR</b>	
XX ±.01/±.25	MATERIAL					
XXX ±.005/±.13						
XXXX ±.001/±.025	FINISH					
XXXXX ±.0005/±.013	SCALE	CODE IDENT	SIZE	DWG NO.	REV	PG. 1
	NTS	IGLV3	A	204129	-	OF 5

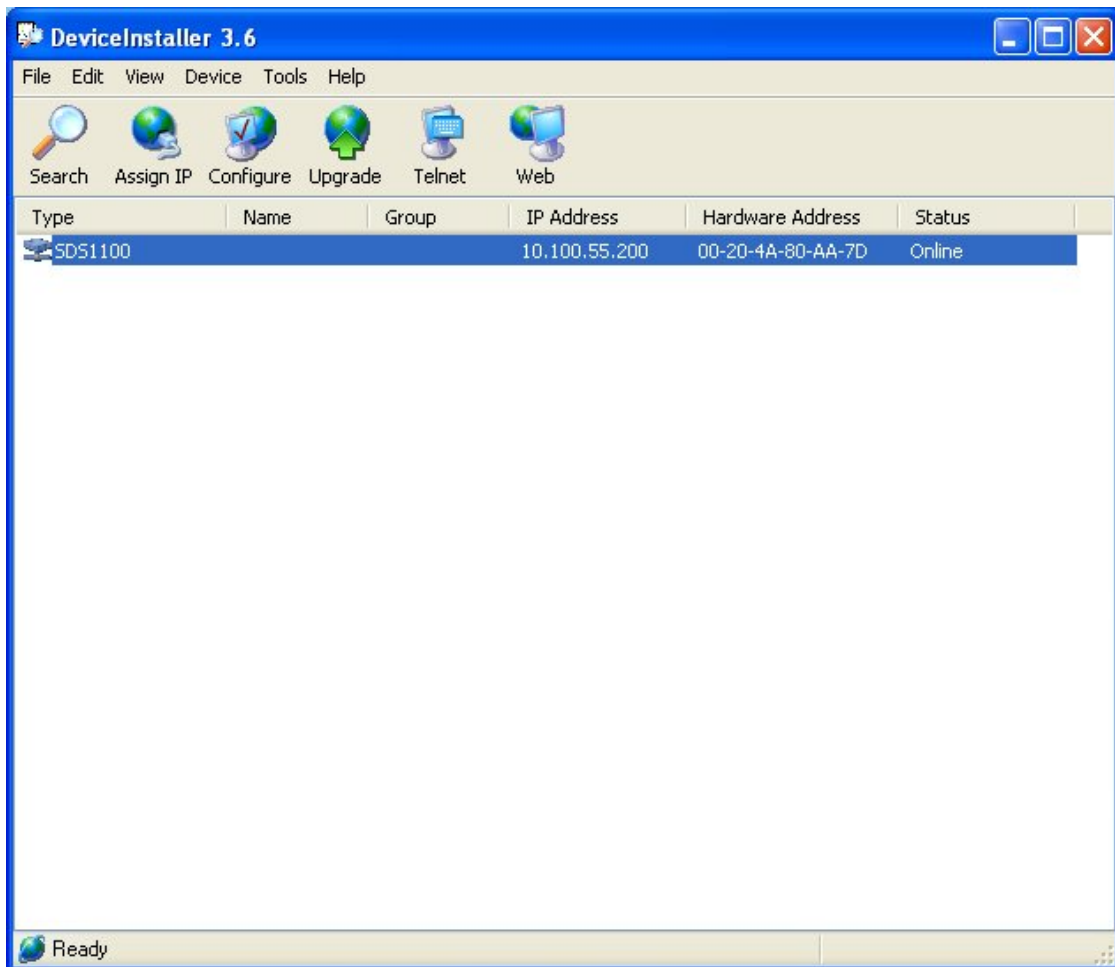
## Introduction

Virtual Serial Ports provide a convenient way to add IP Network connectivity to devices that provide a serial (RS232 or RS485) interface for remote monitor and control. Once configured, these devices appear be directly connected to a host computer's serial port while in reality the device could be anywhere on the IP Network.

This application note is a step-by-step guide to getting connected to the Lantronix SDS 1100 Secure Device Server with the Paradise Datacom Universal M&C.

## Procedure

1. Install the Device Installer and Serial Port redirector software provided on the CD from Lantronix. When this is completed, reboot your computer if not instructed to do so by the installer software.
2. Use the Device Installer software to configure the Serial and Network Settings of the Lantronix SDS 1100. First, use the Device Installer software to locate the SDS 1100 on your network. **See Figure 1.**



**Figure 1**

SCALE NTS	CODE IDENT IGLV3	SIZE A	DWG NO. 204129	REV -	PG. 2 OF 5
--------------	---------------------	-----------	-------------------	----------	---------------

3. Click “Web” on the Toolbar (See Figure 1) to configure the SDS 1100 using your Web Browser. Select the Port Properties from the Menu (See Figure 2) to configure the Serial Port settings of the SDS 1100.

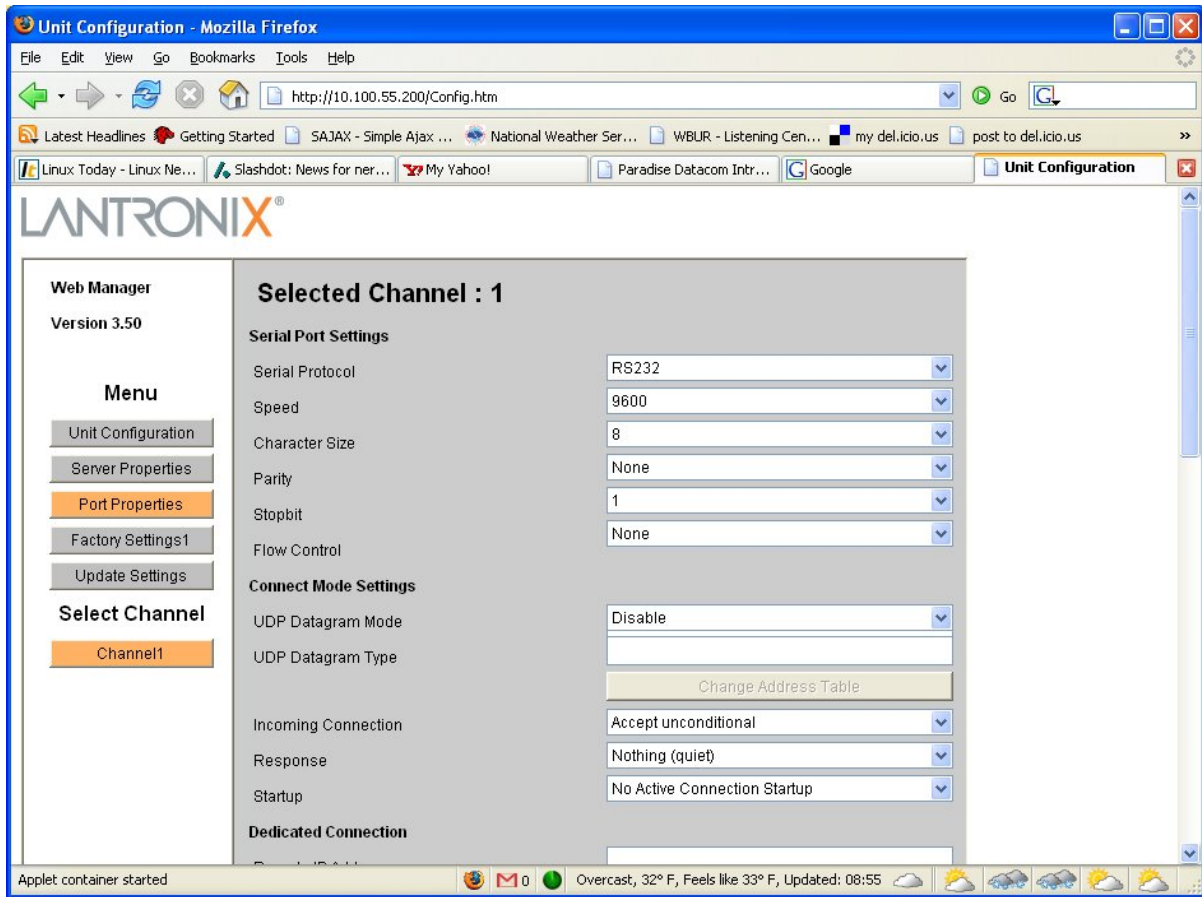


Figure 2

4. Use the Redirector software to assign an IP Address and TCP Port to a COM Port on the host PC. (See Figure 3).

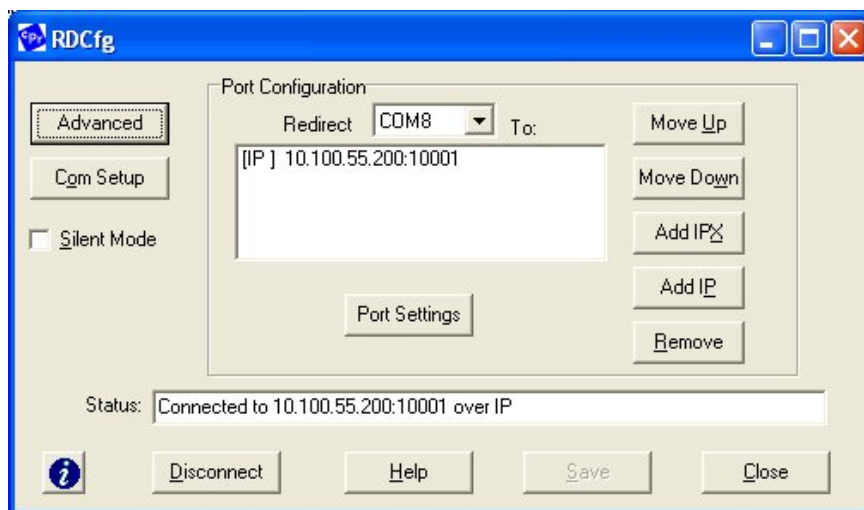


Figure 3

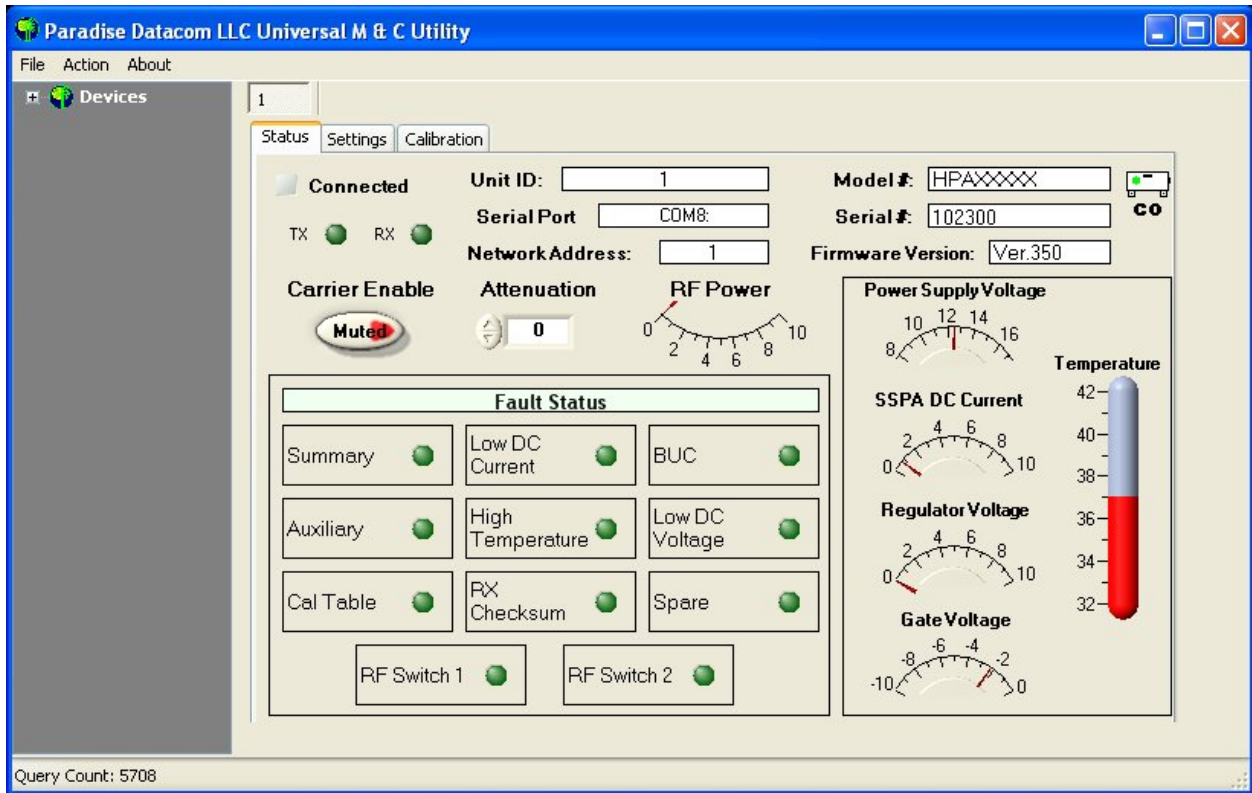
SCALE NTS	CODE IDENT IGLV3	SIZE A	DWG NO. 204129	REV -	PG. 3 OF 5
--------------	---------------------	-----------	-------------------	----------	---------------

5. Save the Redirector settings and close the application.
6. Start the Paradise Datacom Universal M&C Software.
7. In the Main Menu select *Action -> Add Unit -> Compact Outdoor SSPA* or whatever type of device you are connected to.
8. Select the COM Port that you assigned to the SDS 1100. (**See Figure 4**) Either Enter the Amplifier Address or use the “Search for Unit” feature to find the Address of the SSPA. Once the Address is known, click the “Create” button.

**Figure 4**

SCALE NTS	CODE IDENT IGLV3	SIZE A	DWG NO. 204129	REV -	PG. 4 OF 5
--------------	---------------------	-----------	-------------------	----------	---------------

9. Once the SSPA is created, the Universal M&C should appear as it does in **Figure 5** with the *Connected* LED colored green.



**Figure 5**

***NOTE:*** A Null Modem and 9-pin Male to Male adapter are required to connect the SDS 1100 to the Compact Outdoor SSPA “Quick-Connect Cable” provided by Paradise Datacom.

SCALE NTS	CODE IDENT IGLV3	SIZE A	DWG NO. 204129	REV -	PG. 5 OF 5
--------------	---------------------	-----------	-------------------	----------	---------------