



**INSTRUCTIONS FOR
COMPUTERS RUNNING
WINDOWS XP ONLY!**

See Drawing 206806
for instructions for use with
Windows Vista

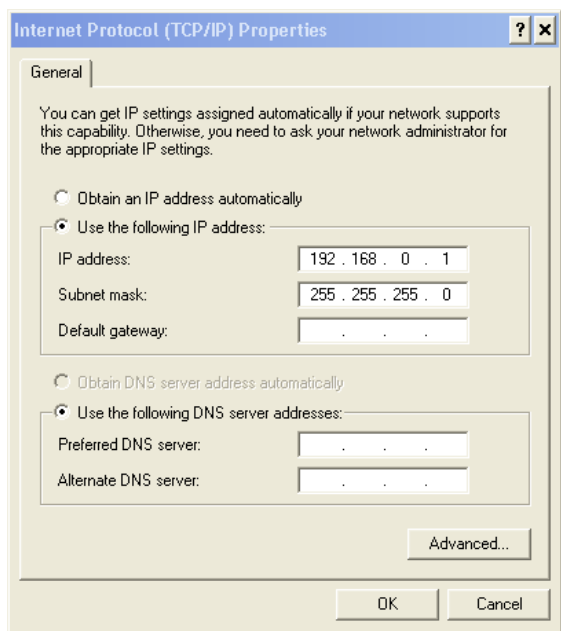
WEB INTERFACE QUICK START GUIDE



By default, the vBUC™ will be in a muted state. You must short pin J to pin K on the M&C Port J4 to unmute the device. Pins J & K are shorted in the supplied Quick Start cable.

STEP 1 - Before Power Up:

1. Install the latest version of Java™ onto a Windows-based PC. (<http://www.java.com/downloads>)
2. Terminate the RF input and output!
3. If connected to a modem that is equipped with FSK, ensure FSK is turned off. (FSK will turn off Web Interface communication)
4. Connect the Quick Start Cable to port J4 of the vBUC™. This will force the vBUC™ into Web Interface mode with the default IP parameters (see Table 1 for details).
5. Connect other end of the Quick Start Cable to the network port of a PC.
6. Configure the PC's TCP/IP properties as shown below. To access the TCP/IP properties, go to *Control Panel -> Network Connections ->* right click on the Network Connection used for the communication (most likely "Local Area Connection") and select *Properties*. Select *Internet Protocol (TCP/IP)* and click the *Properties* button. Configure as seen in Figure 1. When finished, click the *OK* button and close out of all windows.



◀ **Figure 1. Internet Protocol Properties**

Table 1: Default vBUC IP Parameters

IP Parameter	Default Setting
IP Address	192.168.0.9
Gateway	192.168.0.1
Subnet Mask	255.255.255.0
Local Port	1007
IP Lock Address	255.255.255.255
Web Password	paradise

STEP 2 - Power Up:

1. Apply power to the vBUC™.
2. Allow a few seconds for the PC and vBUC™ to establish connection.
3. If connection is successful, the LINK LED on the Network Port of the PC will be lit as seen in Figure 2.

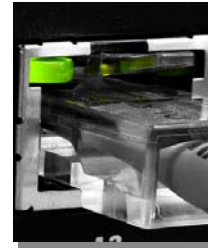


Figure 2. Network Port Link

STEP 3 - Start the Web Interface:

1. Launch Internet Explorer v7.0 or higher.
2. Type in the default IP address of 192.168.0.9 into the address bar of your web browser.
3. A web page will open and launch the M&C application, as seen in Figure 4. The applet will automatically load in the browser window.
4. An input window will pop up prompting the user for a Web Password. The default Web Password is **paradise**. See Figure 5.
5. Click the **OK** button to initiate the java-based M&C application, shown in Figure 6.
6. Change the operating parameters in the Settings tab. For example, to enable Transmit RF, to go the Settings tab, click on the Mute Settings pull-down menu and select "Unmuted".



Figure 4: Loading M&C Applet

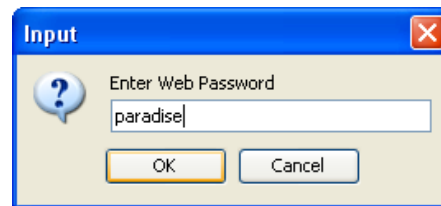
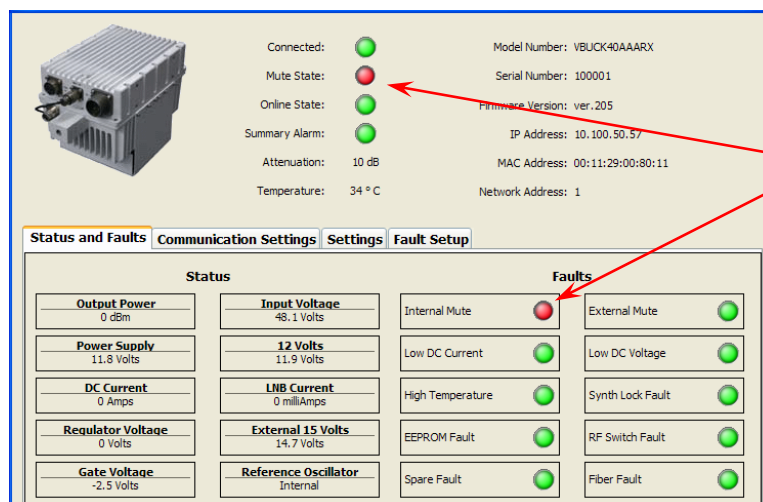


Figure 5: Enter Password (default = "paradise")



Note that the unit is initially muted. Change in Settings tab.

Figure 6: vBUC Java M&C Applet



There are 4 different ways to communicate to the vBUC™; FSK, Serial, IPNET (IPNET includes Web Interface), and SNMPv2. If FSK is present on the IFL In port, all other communication on the M&C port will terminate. Upon removal of FSK, communication on the M&C port will resume.