



## **PARADISE DATACOM APPLICATION NOTE**

### **WEB USER INTERFACE CONTROL OF DISTANT END MODEM**

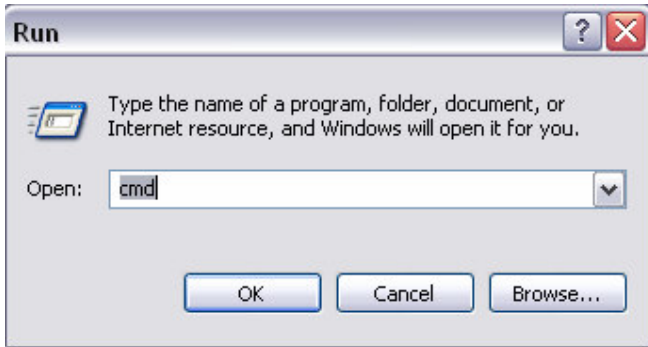
**EVO\_AN\_024**

## Summary:

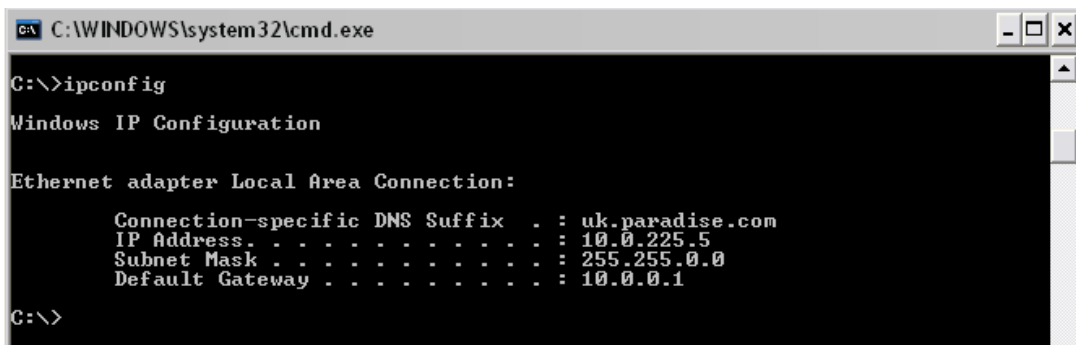
This allows the local user to login to the distant end Modem via the local Modems WUI and change settings or view logs / graphs etc.

## Method:

Establish the PC's IP address: open a DOS Command Prompt Window (select Start, Run and enter `cmd`)



Then type: `ipconfig` at the prompt. (As below)



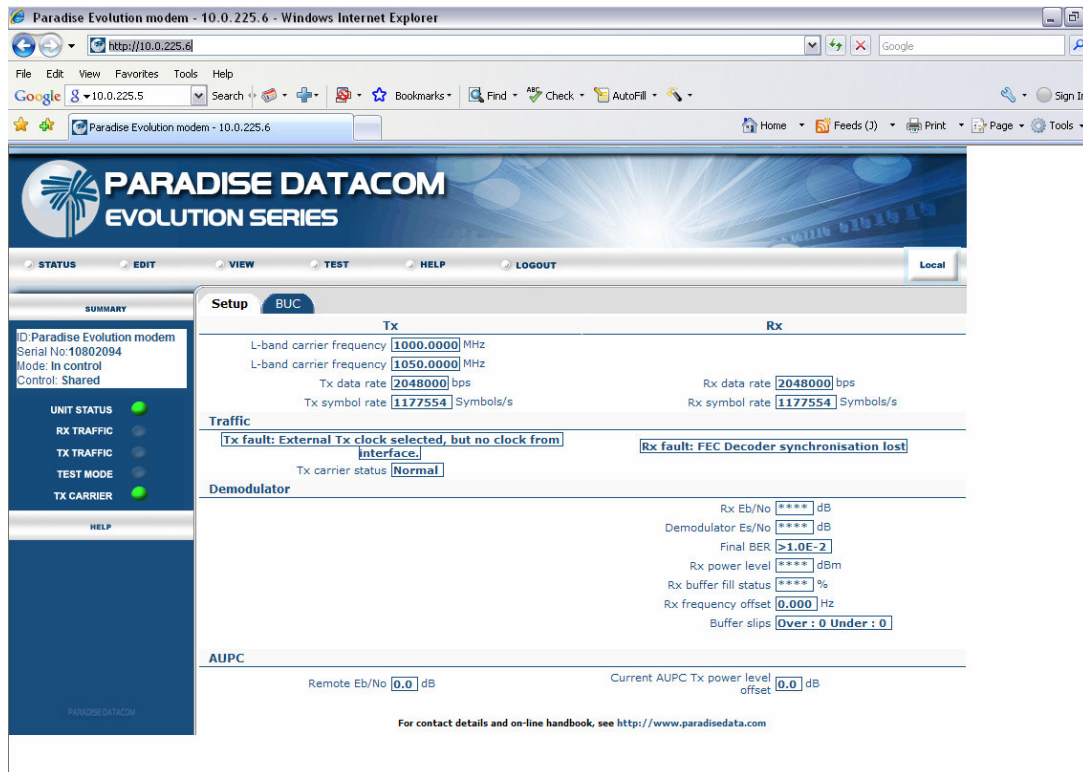
As you can see from the example, the IP address is: 10.0.225.5, with a subnet mask of 255.255.0.0

Note down your IP address etc.

Now configure the Modems M&C IP address: From the Main menu select:

Edit > Unit > M&C> IP address and subnet mask options and ensure the modem has an IP address compatible with your PC (i.e. on the same subnet). For example, an IP address of 10.0.225.6 and subnet Mask of 255.255.0.0 will communicate with the PC.

Connect your PC to the modem M&C Ethernet interface using a straight CAT5E Ethernet cable, and type the IP address entered to the Modem within your browser. The Local Modems Web User Interface (WUI) will appear as below.



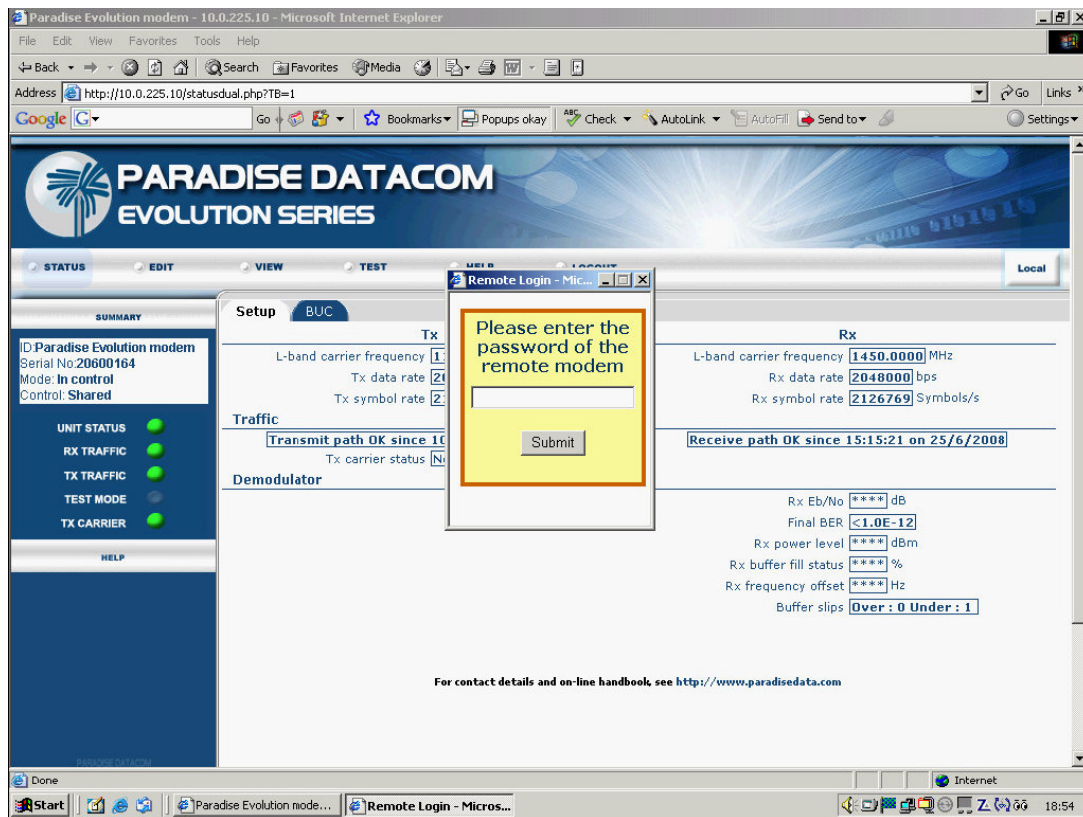
Prior to establishing the remote link you need to configure both Modems to have the same Service (For example, Closed net + ESC) and ESC parameters. (For example, 19200 baud, 8 data bits, No parity, and select the ESC interface to IP. Backward alarm can be set on or off – as long as both Modems are configured the same!)

To do this; From the Main menu select: Edit > Tx > Service and select CI + ESC  
Then configure the ESC channel Main > Edit > Tx > Baseband > Advanced > Overhead > Closed + ESC.

You may also have to configure the Rx paths if they require independently configuring. (i.e TX=RX=Off) The above also omits the general Modem configuration, FEC, modulation, IF frequencies etc, which can be set by using the Edit > All function.

Also check that you have permission as a remote user to control the modems by ensuring Takeaway mode is selected via the Main > Edit> Unit> M&C> Control menu option.

Once you have a working pair of Modems with the Demods locked you can then access the distant Modems WUI via the satellite link; by clicking on the “Local” radio button towards the top right hand side of your browser. This then changes to the “Distant” site screen, as below.



The first action after selecting the distant site WUI is that the user is required to enter the distant modems password, see above. If this has not been changed then the default password is "paradise".

The user will then see the distant terminal WUI, notice that the radio button on the top right of the screen now shows Distant and that the screen colours have changed from blue to brown, see below.

Note: Selecting the distant site WUI causes the local modem web server to connect to the distant modem via the ESC channel and collect the distant modem WUI information. The speed at which the data is collected and displayed is directly related to the ESC rate selected; if the ESC data rate is low the response time of the WUI will be slow.

Paradise Evolution modem - 10.0.225.27 - Microsoft Internet Explorer

Address: <http://10.0.225.10/statusdual.php>

## PARADISE DATACOM EVOLUTION SERIES

STATUS EDIT VIEW TEST HELP LOGOUT Distant

SUMMARY

D Paradise Evolution modem  
Serial No. 999  
Mode: In control  
Control: Shared

UNIT STATUS ●  
RX TRAFFIC ●  
TX TRAFFIC ●  
TEST MODE ●  
TX CARRIER ●

HELP

### Setup BUC

Tx	Rx
L-band carrier frequency: 1450.0000 MHz	L-band carrier frequency: 1150.0000 MHz
Tx data rate: 2048000 bps	Rx data rate: 2048000 bps
Tx symbol rate: 2126769 Symbols/s	Rx symbol rate: 2126769 Symbols/s

### Traffic

Transmit path OK since 11:39:18 on 23/6/2008  
Receive path OK since 17:32:49 on 24/6/2008

Tx carrier status: Normal

### Demodulator

Rx Eb/No: \*\*\*\* dB  
Final BER: <1.0E-12  
Rx power level: \*\*\*\* dBm  
Rx buffer fill status: \*\*\*\* %  
Rx frequency offset: \*\*\*\* Hz  
Buffer slips: Over: 0 Under: 1

For contact details and on-line handbook, see <http://www.paradisedata.com>

Paradise Datacom Limited  
1 Wheaton Road, Witham, Essex, CM8 3TD, England  
Telephone +44 (0)1376 515 636  
Facsimile +44 (0)1376 533 764  
E-mail [admin@paradise.co.uk](mailto:admin@paradise.co.uk)  
[www.paradisedata.com](http://www.paradisedata.com)

Paradise Datacom LLC  
328 Innovation Blvd., State College, PA 16803, U.S.A.  
Telephone +1 814 238 3450  
Facsimile +1 814 238 3829  
E-mail [sales@paradisedata.com](mailto:sales@paradisedata.com)  
[www.paradisedata.com](http://www.paradisedata.com)

24<sup>th</sup> March 2009